

TSM TECHNOLOGY CO.,LTD

**西安领航新材料科技有限公司
领航新材料科技(集团)有限公司**



TSM TITANIUM DEPARTMENT

Web: www.tsm-titanium.com/www.tsm-technology.com
E-mail: info@tsm-technology.com ,info@tsm-titanium.com
Tel:+0086 029-87547434
Fax:+0086 029-87547434
Address: R11502,IFC Glory Xi'an Financial center, No. 10 jinyeRoad, High-Tech Zone, Xi'an, shaanxiProvince,710065,China.

TSM NICKEL DEPARTMENT

Web:www.tsmnialloy.com
E-mail:info@tsm-technology.com ,info@tsm-titanium.com
Tel:+0086 029-87547434
Fax:+0086 029-87547434
Address: R11502,IFC Glory Xi'an Financial center, No. 10 jinyeRoad, High-Tech Zone, Xi'an, shaanxiProvince,710065, China.



Company Profile

TSM TECHNOLOGY CO., LTD – A Global Leader in Specialty Metal Solutions

TSM TECHNOLOGY CO., LTD is a globally recognized supplier and exporter of specialty metal materials, specializing in the research, production, and distribution of titanium and nickel alloy products. We are dedicated to delivering high-performance, corrosion-resistant metal solutions to customers worldwide.

Established in 2011 in Hong Kong, China, TSM TECHNOLOGY (GROUP) CO., LTD serves as our headquarters. In 2015, we expanded our operations with the establishment of the TSM TECHNOLOGY CO., LTD Foreign Trade Department and our production facilities under FUZE NONFERROUS METAL MATERIALS CO., LTD. Leveraging core technologies rooted in independent innovation and supported by internationally certified quality control systems, our products are exported to over 50 countries and regions, including Europe, the Americas, South-east Asia, and the Middle East.

We possess advanced capabilities across the entire industry chain, including titanium and nickel alloy melting, forging, and both cold and hot processing. Our extensive product portfolio includes titanium and nickel sheets, tubes, bars, flanges, and pipe fittings. All products comply with international standards such as ASTM, ASME, and EN. Additionally, we have achieved ISO 9001 Quality Management System certification, AS9100D aerospace certification, and AS9120 certification, ensuring the highest quality standards.

To streamline operations, we maintain large-scale domestic warehousing facilities, enabling efficient logistics and inventory management. This infrastructure significantly reduces delivery lead times and ensures seamless supply chain operations.

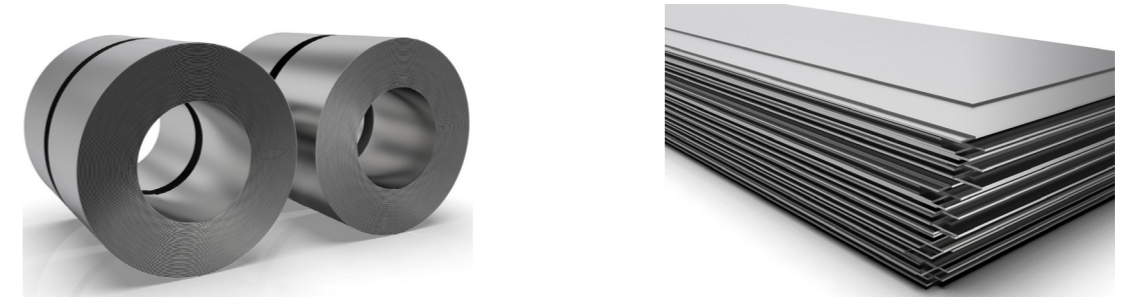
Our products are widely applied in aerospace, petrochemicals, seawater desalination, new energy battery materials, and high-end medical implants. These applications underscore the versatility and reliability of our specialty metal solutions.

Guided by our core philosophy of “Innovation-Driven, Quality-Focused,” we are committed to advancing the sustainable development of specialty metal materials. We invite global partners to join us in exploring the future potential of advanced industrial materials. TSM TECHNOLOGY CO., LTD welcomes the opportunity to discuss potential collaborations and create value together.

Qualification Certificate



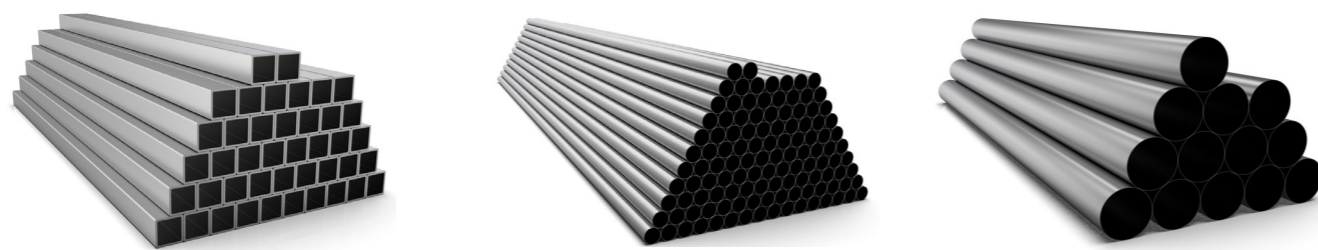
Nickel and Nickel Alloy Plate



Grade	Product Type	Specification (MM)	Standard	Technique
Nickel 200 Nickel 201	Pure Nickel Plate	T0.6-50mm × W1000-2500mm × L2000-6000mm	ASTM B162	Hot rolled Cold rolled
Monel 400	Ni-Cu-Al-Ti Alloy Plate	T0.6-50mm × W1000-2500mm × L2000-6000mm	ASTM B127	Hot rolled Cold rolled
Monel K500	Ni-Cu Alloy Plate	T0.6-50mm × W1000-2500mm × L2000-6000mm	ASTM B165, ASTM B829	Hot rolled Cold rolled
Inconel 600	Nickel Alloy Plate	T0.6-50mm × W1000-2500mm × L2000-6000mm	ASTM B168	Hot rolled Cold rolled
Inconel 601	Nickel Alloy Plate	T0.6-50mm × W1000-2500mm × L2000-6000mm	ASTM B168	Hot rolled Cold rolled
Inconel 625	Nickel Alloy Plate	T0.6-50mm × W1000-2500mm × L2000-6000mm	ASTM B443	Hot rolled Cold rolled
Incoloy 800	Nickel-Iron Alloy Plate	T0.6-50mm × W1000-2500mm × L2000-6000mm	ASTM B409	Hot rolled Cold rolled
Incoloy 825	Nickel-Iron Alloy Plate	T0.6-50mm × W1000-2500mm × L2000-6000mm	ASTM B424	Hot rolled Cold rolled
Inconel 718	Nickel Super Alloy Plate	T0.6-50mm × W1000-2500mm × L2000-6000mm	ASTM B670	Hot rolled Cold rolled
Hastelloy C276	Nickel Alloy Plate	T0.6-50mm × W1000-2500mm × L2000-6000mm	ASTM B575	Hot rolled Cold rolled
Hastelloy B-3	Nickel-Molybdenum Alloy	T0.6-50mm × W1000-2500mm × L2000-6000mm	ASTM B333	Hot rolled Cold rolled
Hastelloy G35	Nickel Alloy Plate	T0.6-50mm × W1000-2500mm × L2000-6000mm	ASTM B575	Hot rolled Cold rolled
Hastelloy G30	Nickel Alloy Plate	T0.6-50mm × W1000-2500mm × L2000-6000mm	ASTM B582	Hot rolled Cold rolled

Note: Non-standard size are also available. For more nickel materials, please consult sales for details

»» Nickel and Nickel Alloy Tube



Grade	Product Type	Standard	Technique
Nickel 200	Pure Nickel Tube	ASTM B163	(Hot Rolled/Cold Rolled)
Nickel 201	Low Carbon Nickel Tube	ASTM B163	(Hot Rolled/Cold Rolled)
Monel 400	Nickel-Copper Alloy Tube	ASTM B165	(Hot Rolled/Cold Rolled)
Monel K500	Nickel-Copper Alloy Tube	ASTM B165, ASTM B829	(Hot Rolled/Cold Rolled)
Inconel 600	Nickel Alloy Tube	ASTM B167	(Hot Rolled/Cold Rolled)
Inconel 601	Nickel Alloy Tube	ASTM B167	(Hot Rolled/Cold Rolled)
Inconel 625	Nickel Alloy Tube	ASTM B444	(Hot Rolled/Cold Rolled)
Incoloy 800	Nickel-Iron Alloy Tube	ASTM B407	(Hot Rolled/Cold Rolled)
Incoloy 825	Nickel-Iron Alloy Tube	ASTM B423	(Hot Rolled/Cold Rolled)
Inconel 718	Nickel Super Alloy Tube	ASTM B163 ASTM B407	(Hot Rolled/Cold Rolled)
Hastelloy C276	Nickel Alloy Tube	ASTM B622	(Hot Rolled/Cold Rolled)
Hastelloy B-3	Nickel Alloy Tube	ASTM B622	(Hot Rolled/Cold Rolled)
Hastelloy G35	Nickel Alloy Tube	ASTM B622, ASTM B619	(Hot Rolled/Cold Rolled)
Hastelloy G30	Nickel Alloy Tube	ASTM B622, ASTM B619	(Hot Rolled/Cold Rolled)

Note: ASMR, DIN, GOST, JIS standard can be negotiable

Classification	Seamless Tube Length		Welding-rolling tube Length	
	OD ≤ 15	OD > 15	Wall Thickness	
Length(mm)	500-4000	WT ≤ 2.0 500-9000 WT > 2.0-4.5 500-6000	0.5-0.8 500-8000	>0.8-2.0 500-5000
Classification	Welded Tube Length			
	WT 0.5-1.25	WT > 1.25-2.0	WT > 2.0-2.5	
Length(mm)	500-6000	500-6000	500-15000	

Application

- Chemical Equipment) – Heat exchangers, condensers, reactors, evaporators
- Oil & Gas – Offshore drilling platforms, high-temperature and high-pressure pipelines, oil and gas transportation
- Aerospace & Aviation – Engine parts, high-temperature corrosion-resistant systems)
- Marine Engineering– Seawater desalination equipment, ship corrosion-resistant pipelines
- Nuclear Industry – Nuclear fuel processing, nuclear reactor cooling systems
- Electronics – High purity gas delivery, special electrode rod channel

Note: Beyond the specified length in the table, can be negotiable

»» Nickel and Nickel Alloy Bars

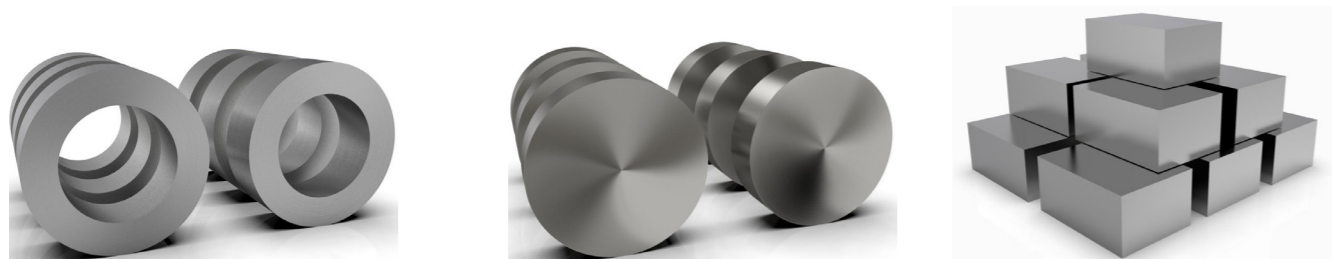


Grade	Product Type	Standard	Technique
Nickel 200	Pure Nickel Bar	ASTM B160	(Hot Rolled/Cold Rolled)
Nickel 201	Low Carbon Nickel Bar	ASTM B160	(Hot Rolled/Cold Rolled)
Monel 400	Nickel-Copper Alloy Bar	ASTM B164	(Hot Rolled/Cold Rolled)
Monel K500	Nickel Alloy Bar	ASTM B166	(Hot Rolled/Cold Rolled)
Inconel 600	Nickel Alloy Bar	ASTM B166	(Hot Rolled/Cold Rolled)
Inconel 601	Nickel Alloy Bar	ASTM B446	(Hot Rolled/Cold Rolled)
Inconel 625	Nickel-Iron Alloy Bar	ASTM B408	(Hot Rolled/Cold Rolled)
Incoloy 800	Nickel-Iron Alloy Bar	ASTM B425	(Hot Rolled/Cold Rolled)
Incoloy 825	Nickel Alloy Bar	ASTM B574	(Hot Rolled/Cold Rolled)
Inconel 718	Nickel Super Alloy Bar	ASTM B637	(Hot Rolled/Cold Rolled)
Hastelloy C276	Nickel Super Alloy Bar	ASTM B637	(Hot Rolled/Cold Rolled)
Hastelloy B-3	Nickel-Molybdenum Alloy Bar	ASTM B335	(Hot Rolled/Cold Rolled)
Hastelloy G35	Nickel Alloy Bar	ASTM B581	(Hot Rolled/Cold Rolled)
Hastelloy G30	Nickel Alloy Bar	ASTM B581	(Hot Rolled/Cold Rolled)

Application

- Chemical Equipment – Corrosion-resistant equipment, heat exchangers, pressure vessels
- Oil & Gas – Offshore drilling platforms, oil & gas pipelines
- Aerospace & Aviation – Engine components, high-temperature resistant parts
- Marine Engineering– Seawater desalination, corrosion-resistant ship pipelines
- Nuclear Industry– Nuclear fuel processing, reactor components
- Power Industry – Flue gas desulfurization, thermal power plants

»» Nickel and Nickel Alloy Forging



Grade	Product Type	Standard	Technique
Nickel 200	(Ring, Disc, Block, Customized)	ASTM B564	(Hot Forged/Machined)
Nickel 201	(Ring, Disc, Block, Customized)	ASTM B564	(Hot Forged/Machined)
Monel 400	(Ring, Disc, Block, Customized)	ASTM B564	(Hot Forged/Machined)
Monel K500	(Ring, Disc, Block, Customized)	ASTM B564	(Hot Forged/Machined)
Inconel 600	(Ring, Disc, Block, Customized)	ASTM B564	(Hot Forged/Machined)
Inconel 601	(Ring, Disc, Block, Customized)	ASTM B564	(Hot Forged/Machined)
Inconel 625	(Ring, Disc, Block, Customized)	ASTM B564	(Hot Forged/Machined)
Incoloy 800	(Ring, Disc, Block, Customized)	ASTM B564	(Hot Forged/Machined)
Incoloy 825	(Ring, Disc, Block, Customized)	ASTM B564	(Hot Forged/Machined)
Inconel 718	(Ring, Disc, Block, Customized)	ASTM B637	(Hot Forged/Machined)
Hastelloy C276	(Ring, Disc, Block, Customized)	ASTM B564	(Hot Forged/Machined)
Hastelloy B-3	(Ring, Disc, Block, Customized)	ASTM B564	(Hot Forged/Machined)
Hastelloy G35	(Ring, Disc, Block, Customized)	ASTM B564	(Hot Forged/Machined)
Hastelloy G30	(Ring, Disc, Block, Customized)	ASTM B564	(Hot Forged/Machined)

»» Nickel and Nickel Alloy Forgings Size Range

RING AND DISC				BLOCK		
OD mm	ID mm	Section Height, mm	Wall Thickness, mm	THK mm	WIDE mm	LENGTH mm
φ200 - 400	φ100 - 300	25 - 120	40 - 1000	≥ 30	100-600	100-2000
φ400 - 700	φ150 - 500	35 - 600	40 - 1000			
φ700 - 2000	φ300 - 900	45 - 600	40 - 600			

Note: Other sizes and MOQ can be negotiable.

»» Nickel and Nickel alloy flanges



(PL)
Plate-type Flat Welding Flange



(SO)
Slip-on Neck Flange



(WN)
Weld Neck Flange



(PJ)
Ring Loose Flange



(TH)
Threaded Flange



(TH)
Threaded Flange

Grade	PL (Plate Flange) SO, (Slip On Flange), WN (Weld Neck Flange) PJ (Pipe Joint Flange) TH (Threaded Flange) SW (, Socket Weld Flange)	
Size range	DN15 - DN1200 (2"-48")	
Material	Forging Standard	Size Standard
Nickel 200	ASTM B564	ASME B16.5, ASME16.9 ASNE16.11
Nickel 201	ASTM B564	ASME B16.5, ASME16.9 ASNE16.11
Monel 400	ASTM B564	ASME B16.5, ASME16.9 ASNE16.11
Monel K500	ASTM B564	ASME B16.5, ASME16.9 ASNE16.11
Inconel 600	ASTM B564	ASME B16.5, ASME16.9 ASNE16.11
Inconel 601	ASTM B564	ASME B16.5, ASME16.9 ASNE16.11
Inconel 625	ASTM B564	ASME B16.5, ASME16.9 ASNE16.11
Incoloy 800	ASTM B564	ASME B16.5, ASME16.9 ASNE16.11
Incoloy 825	ASTM B564	ASME B16.5, ASME16.9 ASNE16.11
Inconel 718	ASTM B637	ASME B16.5, ASME16.9 ASNE16.11
Hastelloy C-276	ASTM B564	ASME B16.5, ASME16.9 ASNE16.11
Hastelloy B-3	ASTM B564	ASME B16.5, ASME16.9 ASNE16.11
Hastelloy G35	ASTM B564	ASME B16.5, ASME16.9 ASNE16.11
Hastelloy G30	ASTM B564	ASME B16.5, ASME16.9 ASNE16.11

Application

- Chemical equipment-corrosion-resistant equipment, heat exchangers, pressure vessels
- Oil and Gas – Offshore Drilling Platforms, Oil and Gas Pipelines:
- Marine engineering—seawater desalination, corrosion-resistant ship pipelines
- Boilers and pressure vessels

Our services: We accept custom flange orders based on customer drawings. For all standard parts, we will provide detailed technical drawings within 3 days after receiving the advance payment for customer confirmation before starting production.

»» Nickel and Nickel alloy pipe fittings



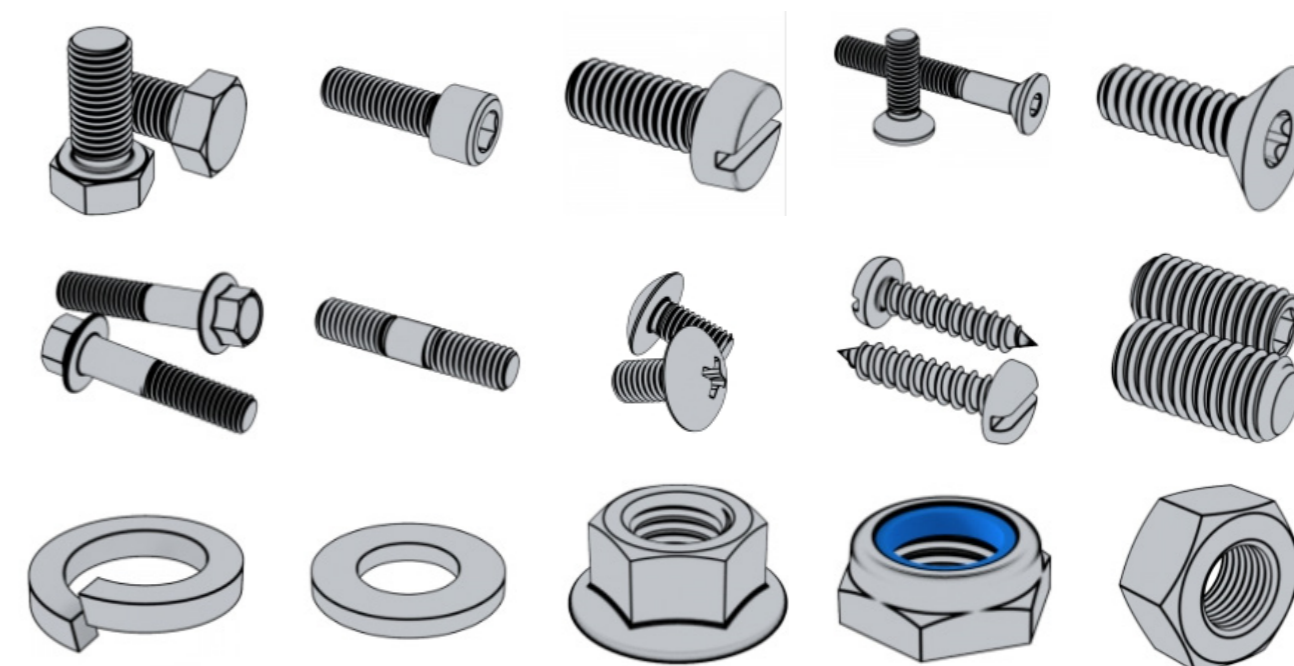
Grade	Product Type	Specification	Standard	Technique
Nickel 200	Elbow(45°90°180°)	1/2" - 96" DN15 - DN2400	ASTMB363 EN 10253 DIN 2065	Push, butt welding, polishing, lathe processing, pickling, sand blasting
Nickel 201				
Monel 400				
Inconel 600	Tee (reducing & equal)	DN15 - 1200 Sch5S - Sch80S	ASME B16.9	Extrusion or butt weld ends
Inconel 601				
Inconel 625				
Incoloy 800	Reducer (concentric & eccentric)	N15 - 1200 Sch5S - Sch80S	ANSI/ASME B16.9	Push or butt welding and forging
Incoloy 825				
Inconel 718				
Hastelloy C-276	stub ends, cap	DN15 - 1200 Sch5S - Sch80S	ASME SB16.5 ASME SB16.9 ASME SB16.11	Extrusion or butt weld ends
Hastelloy B-3				
Hastelloy G35				

Application

- Chemical, petroleum, metallurgy, light industry, instrumentation, power generation, water desalination, medical apparatus, alkali, salt, electroplating, coking, chemical fertilizer, etc.

Note:1. According to customer demands also produce other angle of the elbow.
2. Specification: DN140 below for seamless pipe fitting, DN140 above for welding pipe fittings.

»» Nickel alloy bolts & nuts



Grade	Product Type	(MM)Specification	Standard	Technique
Nickel 200	Nickel Bolt	M1--M64*L6--300mm (or as your inquired)	DIN912 DIN913 DIN934 DIN965 DIN931	Forged head, Rolled threads and CNC machine
Nickel 201				
Monel 400				
Inconel 600	Nickel screw	M2.5--M64*L6--300mm (or as your inquired)	DIN933 DIN7991 DIN7984 DIN6921 DIN922	
Inconel 601				
Inconel 625				
Incoloy 800	Nickel nut	M2.5--M64	DIN917 DIN906 DIN7964 ISO4762	
Incoloy 825				
Inconel 718				
Hastelloy C-276	Nickel Washer	M2.5--M64	ISO4032 ISO14581 ISO10642 ISO7380 ISO10642 ISO13918	
Hastelloy B-3				
Hastelloy G35				
Hastelloy G35				

Application

- Equipment accessories: aircraft, Marine, petrochemical, medical, automotive, racing, electronics and semiconductors, etc.

Note:1. Other standard or non-standard titanium bolts, nuts & wash can be customized.
2. We can produce different types of parts according to your drawings

»» Processing Equipment



»» More Products

ALLOY		Standard product form						
FSA	UNS&	Tube&pipe		Sheet&plate	Rod&Bar	Strip	Welding wire	Forging
		seamless	welded					
Inconel601	N06601	B163/B167 B829	/	B168AMS 5870	B166	B168	B166	B564
Inconel625	N06625	B444AMS 5581	B704/B705 AMS5581	B443AMS 5599	B44 6AMS5566	B443AMS 5599	/	B564
Inconel718	N07718	AMS5589 5590	/	B670AMS 5596/5597	B637 AMS5562/5664	B670AMS 5596/5597	/	B637
Inconel750	N07750t	AMS5582 5583	AMS5582 5583	AMS5542/5598	B637AMS56 67/5670/5671	/	AMS 5542 5598	/
Inconel800	N08800	B163/B407	B163	B409AMS5871	B408	B409AMS587	/	B564
Incone800H	N08810	B163/B407	B514	B409AMS5871	B408	B409AMS587	/	B564
Incoloy800HT	N08811	B163/B407	B515	B409AMS5871	B408	B409AMS587	/	B564
Incoloy825	N08825	B163/B423	B163/B704 B705	B424	B425	B424	/	/
Incoloy 926	N08926	B677	B673/B674	B625	B649	B625	B649	/
Hastelloyx	N06002	B622AMS 5587/5588	B619/B622 AMS5588	B435AMS 5536	B572AMS 5754	B435	/	/
HastelloyC22	N06022	B622	B619/B626	B575	B574	B575		B564
HastelloyC276	N010276	B622	B619/B626	B575	B574	B575	/	B564
HastelloyB2	N010665	B622	B619/B626	B333	B335	B333	/	
HastelloyC (NS 333)	N01002S	/	/	B334AMS 5530	/	B336AMS57 50AMS5731	B334 AMS5530	A453
A-286 (GH2132)	66286	/	/	AMS5525/5735	/	57325737 5726/5804	AMS5525 5735	/
Alloy20	N08020	B729	B464 B468/B474	B463	B472/B473	B463	B471 B473/ B475	/
Alloy28	N08028	B668	/	/	/	B709	/	/
Alloy31	N08031	B622	B619/B626	B625	B581/B649	B625	B649	B564
Allay200	N02200	B161/B163	B725/B730	B162	B160	B162	/	/
Alloy201	N02201	B161/B163	B725/8730	B162	B160	B162	/	/
Monel400	N04400	B161/B163	/	B127AMS 4544	B164 AMS 4675/4730	/	/	B564
MonelK-500	N05500	/	/	B965	AMS 4676	B865	/	/
Nimonic80A	N07080	/	/	/	B637	/	/	B637
Invar 36	K93600	/	/	B388/B753	/	B388/B753	/	/